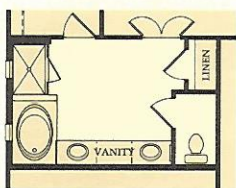
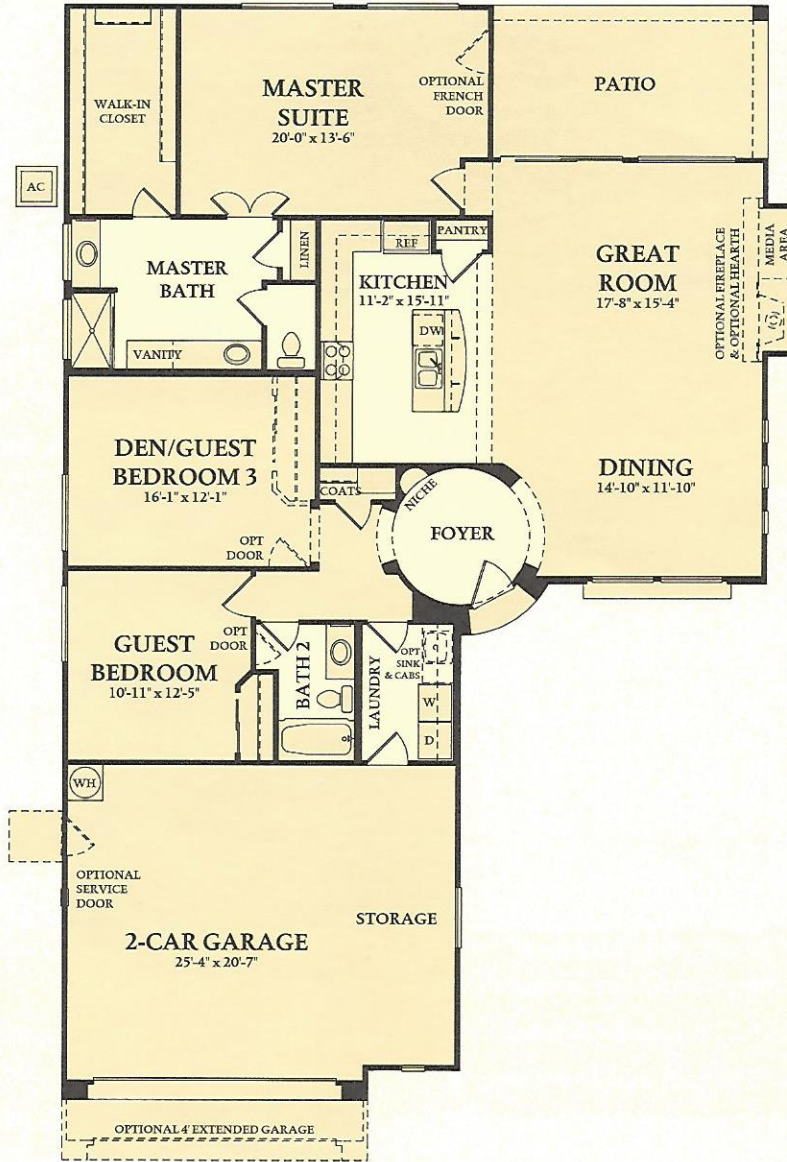
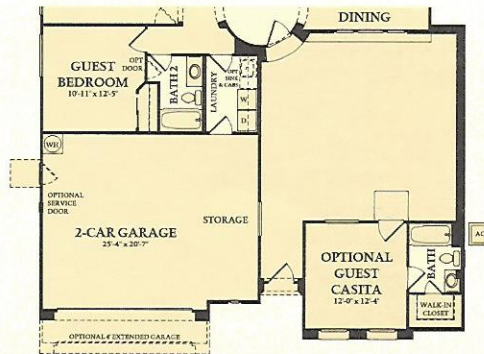


The San Marco

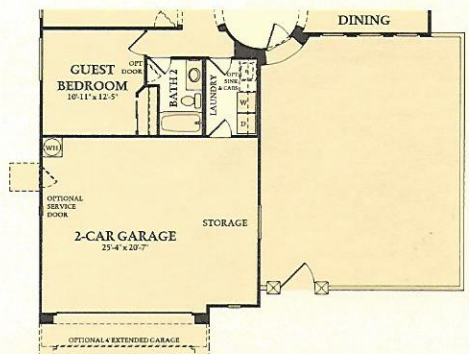
GREAT ROOM, 2 BEDROOMS, DEN, 2 BATHS,  
 2-CAR GARAGE WITH STORAGE SPACE, COVERED PATIO  
 LIVABLE AREA: 1,904 SQUARE FEET



OPT. LUXURY  
 MASTER BATH



OPTIONAL COURTYARD WALL  
 WITH GUEST CASITA



OPTIONAL FULL HEIGHT OR 4' HIGH  
 COURTYARD WALL WITH GATE OR DOOR