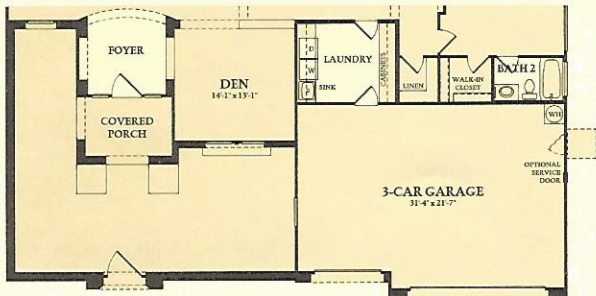
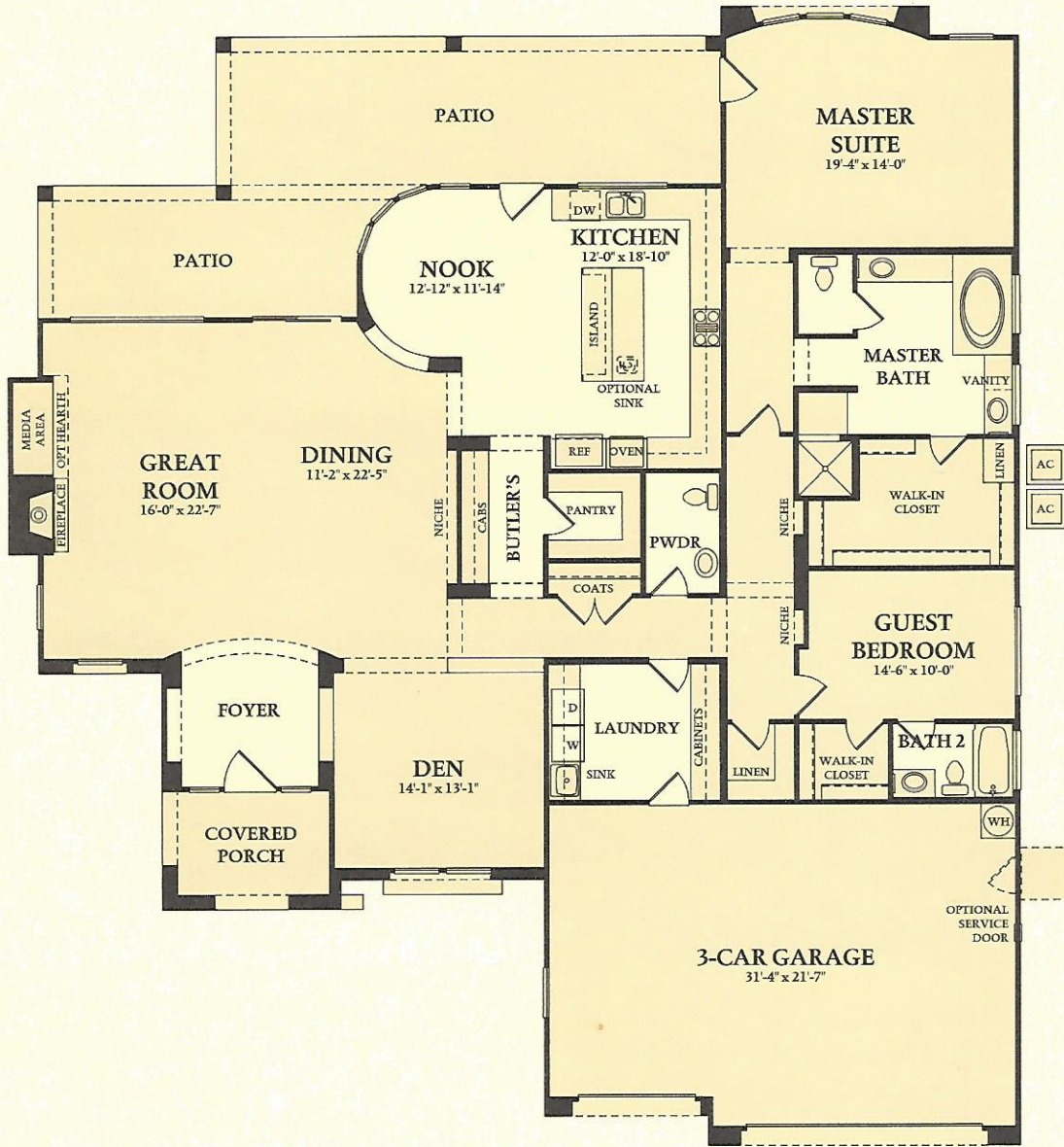
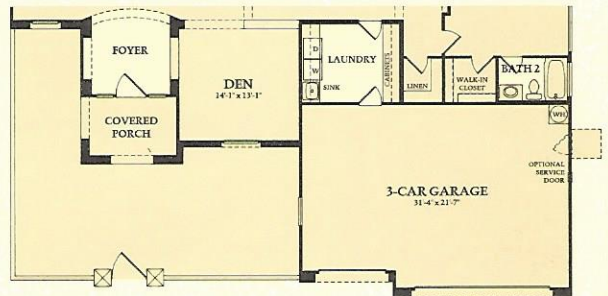


*The Figueroa*

GREAT ROOM WITH FIREPLACE, BREAKFAST NOOK,  
 2 BEDROOMS, DEN, 2.5 BATHS, 3-CAR GARAGE, COVERED PATIO  
 LIVABLE AREA: 2,785 SQUARE FEET



OPTIONAL FULL HEIGHT  
 COURTYARD WALL WITH DOOR



OPTIONAL 4' HIGH COURTYARD  
 WALL WITH GATE